

Plant a Tree, Rescue a Forest for Earth Day 2009

[Click here to register](#)

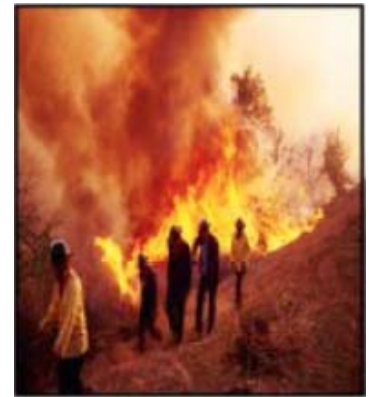


One of the major factors of global climate change is deforestation. Trees capture and hold carbon throughout their lifetime. Fires release that carbon immediately. Along with the reduction of fossil fuel, we need to sequester the carbon that we continue to produce daily through our choice of consumerism; food, energy, clothing, and general purchases. Therefore replacing burned areas is crucial to balancing nature. This is world sustainability beyond the Bay Area.

As “carbon sinks”, forests need our protection...

Here is a unique opportunity to assist rangers with forest restoration after back to back forest fires throughout the western states. In January, several hundred pounds of forest seeds have been brought out of cold storage to stratify until this spring when they are to be sown at the Placerville nursery. Volunteers will be performing standard nursery practices in seed preparation. The seedlings from these growing grounds will be distributed throughout the western national forests to areas of recent fires.

We will travel by carpool on Friday, April 17th from the Bay Area to Placerville. Food and lodging is on your own. Some groups take advantage of local campgrounds. Early Saturday we meet the rangers at the nursery. All of the supplies and equipment will be waiting for us. We will work for six hours. After which many individuals return to their lodging and rest. Later, we will meet for dinner at a local restaurant. The rangers may ask us to return again on Sunday. This is optional.



Register online by April 1st. Students: \$20 with proof of status. Adults: \$35. This program is not underwritten by a grant and these fees are to cover administrative costs only, there are no frills! This activity is for persons who are at least 18 by April 18th.

Orientation is Wednesday, April 15th.

Bring a copy of your ID for security.

Marin ReLeaf is a 501 © (3), a non-profit organization dedicated to educate and encourage the public in planting and care of trees, to promote their appreciation and protection.

Contributions toward this event are gratefully accepted!

[Click here to register](#)